

# Firmware Updater for the SUPER COOLSCAN 8000 ED

---

---

*Introduction* (p. 2) 

*Running the Updater* (pp. 3–6) 

# Introduction

---

## 1.1 Overview

The SUPER COOLSCAN 8000 ED firmware update program, SUPERCOOLSCAN8000ED\_xxx.exe (Macintosh version SUPERCOOLSCAN8000ED\_xxx; “xxx” is a three-digit number giving the firmware version) is a utility that updates the firmware stored in the flash memory of the SUPER COOLSCAN 8000 ED.



Update program icon

## 1.2 Before Running the Updater

To run the update program, you must have Nikon Scan version 3.1 or later installed on your system and your SUPER COOLSCAN 8000 ED must be ready for use. Note also that the existing firmware can not be overwritten by an earlier version.

Before running the updater, close any other applications and terminate any programs, such as screen savers, that start automatically after a certain length of time has passed. Note that only one SUPER COOLSCAN 8000 ED can be connected to your computer at a time; if you have more than one scanner of the same type connected to your computer, disconnect all but the device on which you will be performing the update.

Before running the updater, you should also confirm that the interface cable connecting the scanner to the computer, and the power cables connecting the scanner and computer to a power source, are securely connected.

---

### Important

---

After starting the updater, do not perform any of the operations below until a message appears stating that the update is complete. Depending on their timing, any of these actions could damage the firmware, making it impossible to download it to the scanner:

- Turning the scanner or host computer off
- Disconnecting the interface cable
- Performing any operation on the host computer, including moving the mouse
- Connecting or disconnecting other IEEE 1394 devices or turning them on or off (note that some IEEE 1394 devices turn off automatically if no operations are performed for a specified period; such devices should be disconnected from the computer before the update begins)

The update takes approximately one minute to complete.

# Running the Updater

## 2.1 Starting the Updater

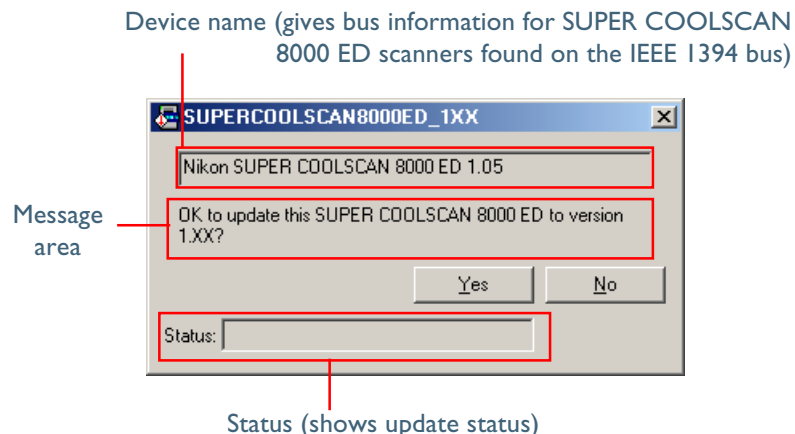
If you are using Windows (Windows 98SE or later), start “SUPER COOLSCAN8000ED.exe” by selecting **Run...** from the **Start** menu or double-clicking the program icon in the Windows Explorer. Macintosh users can start the updater by double-clicking the program icon.

The first dialog displayed after the updater starts is the software license agreement. The license agreement is available in Japanese, English, French, German, and Spanish; the language displayed can be selected from the language menu at lower left. If, after reading the software license agreement, you agree to its terms and conditions, click **Yes**. The updater dialog will then be displayed. If you do not agree to the terms and conditions of the license agreement, click **No**. The program will end without updating scanner firmware.

All subsequent dialogs will be displayed in the language selected in the license agreement dialog.

## 2.2 Beginning the Update

The updater begins a scan of the IEEE 1394 bus after displaying the main dialog (shown below).



The device name includes the scanner name and the current firmware version:

**Nikon SUPER COOLSCAN 8000 ED 1.05**

(1)

(2)

- (1) Device name
- (2) Current firmware version

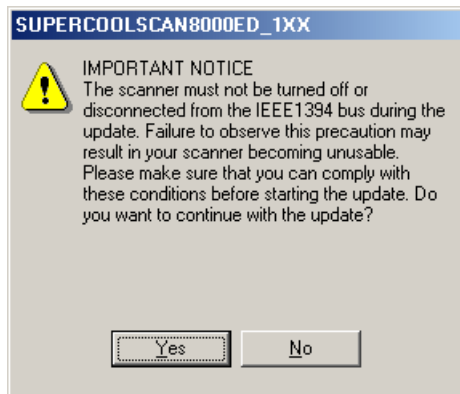
Once a SUPER COOLSCAN 8000 ED is located, the message shown in the illustration above will appear in the message area, giving the version of the firmware that will be written to the scanner during the update. To update the scanner shown in the device name text box to the firmware version indicated in the message area, click **Yes**. To exit the updater without updating scanner firmware, click **No**. The effects produced by each of these buttons are further detailed below.

---

### Yes

---

Clicking **Yes** displays the following dialog.



Clicking **Yes** in the dialog above starts the update. To exit the updater without updating scanner firmware, click **No**.

---

### No

---

Click **No** to exit the updater without updating scanner firmware.

---

### The status area

---

The status area shows update status as follows:

- Starting updater...:  
application initializing
- Searching for SUPER COOLSCAN 8000 ED:  
searching for connected devices
- Loading data...:  
performing update
- Initializing...:  
performing update



The update takes about one minute to perform. Do not take any of the actions described in section 1.2 until the dialog described in section 2.3 is displayed.

## 2.3 Exiting the Updater

The dialog shown below is displayed when the update finishes without incident. Click **OK** to exit the updater.



## 2.4 Error Messages

Should any of the following messages be displayed, take the steps detailed below.

---

### ***“No SUPER COOLSCAN 8000 ED connected.”***

This is displayed in the main dialog message area when the computer has failed to recognize the SUPER COOLSCAN 8000 ED. Attempt the update again after confirming that the computer recognizes the scanner.

---

### ***“This SUPER COOLSCAN 8000 ED does not require this update.”***

This message indicates that no update was performed because the firmware version provided with the updater is the same as or earlier than the version already installed in the scanner.

---

Earlier versions have smaller version numbers.

---

### ***“Update failed. Try again after restarting the scanner.”***

An error occurred while the firmware was being written to the scanner, with the result that the firmware may not have been correctly copied to the device. Click **OK** to exit the updater, turn the scanner off and then on, and then attempt the update again. Should this error appear a second time, check to be sure that the scanner is on and that the power and interface cables are correctly connected. If the scanner was on and the cables were correctly connected, restart the host computer and attempt the update again.

If the error persists after you have attempted the above remedies, there may be a problem with your scanner. Contact your Nikon service representative with the numerical code that appeared in the dialog, if any.



When the scanner is turned off and then on again, it will not initialize in the usual fashion and the status LED will not blink, but this does not indicate a malfunction. In this state, the scanner is capable of a bare minimum of communications over the IEEE 1394 interface.

***“Update completed successfully. Restart your scanner.”***

Firmware was updated successfully, but the updater failed to initialize the device. Initialize the scanner by turning it off and then on again.

If the device fails to initialize normally after being restarted, there may be a problem with your scanner. Contact your Nikon service representative with the numerical code that appeared in the dialog, if any.